

# Manual

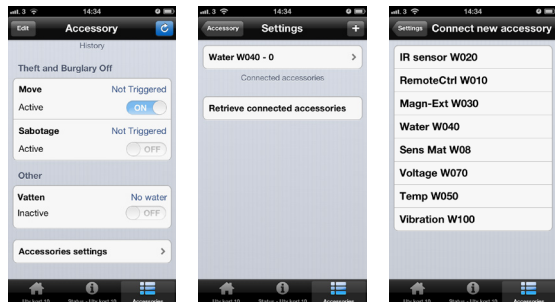
## W020 IR sensor

### 1. Mount the batteries

Use a cross-headed screwdriver to release the screw and be able to open up the product. Mount the batteries. The LED lamp on the little circuit card is flashing if the batteries are OK.

### 2. Connect with the alarm by using the Smartphone app

Make sure that you have downloaded the latest version of the app. The alarm unit needs to be connected to a voltage source while pairing.

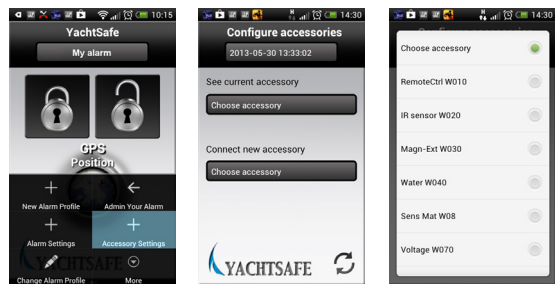


### iPhone

1. Click on **Accessories** at the bottom right of the start page. Choose then **Accessories settings**.
2. Click on the plus button at the top right of the page.
3. Click on the accessory you want to connect. Later choose **Connect\*** and follow the instructions.

Go to the status page for the accessories to activate the sensors of the accessories. The installation is now done.

\*The little LED-light on the accessory starts flashing fast if the connection to the alarm is ok. If the attempt to connect fails the light is lighting up for 1-2 seconds. If you don't receive any feedback please try again.



### Android

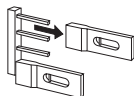
1. Click on the menu button at the bottom of the Android phone to see the box of alternatives. Choose later **Accessory Setting**.
2. Click on **Choose accessory** under **Connect new accessory**.
3. Click on the accessory you want to connect. Later choose **Connect\*** and follow the instructions.

Go to the status page for the accessories to activate the sensors of the accessories. The installation is now done.

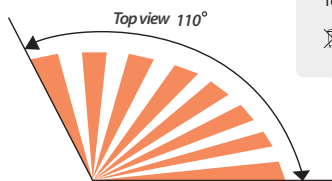
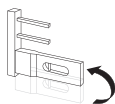
### 3. Mounting

The IR-sensor sends an alarm when it detects heat emission from a person. See picture for detection angle. The IR-sensor can be mounted with help of tape or burdock. You need to open up the product to be able to mount the product with screws from the inside. Release the screws, open up the product and then remove the circuit card. Don't place the IR-sensor in places where you have strong sunlight which might activate the sensor. The signal from the sensor part to the alarm unit will pass through walls and a big variety of materials. However, check the signal before mounting. After the accessory has been connected to the alarm you are able to push the button on the circuit card fast. If the LED light on the circuit board is flashing this means that the distance range is enough. You will receive alarm directly in your phone if the battery in the accessory has to be changed.

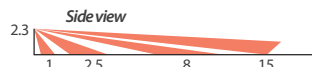
A. Take away the upper plastic cap to turn off the lamp.



B. Move the lower plastic cap one step up and put it over the two sticks to increase the sensitivity of the sensor.



(The illustration above is showing the field of view. Unit: meter.)



### Technical specification

- Measurements: ..... 111 x 66 x 45 mm
- Battery lifetime: ..... up to 5 years
- Type of battery: ..... 2 x AAA
- Battery capacity: ..... 1000 mAh
- Distance range (free sight): ..... ca 150m
- Temperature range: ..... -30 to 70 °C

